



# OPTIM-R®

## NEXT GENERATION INSULATION SOLUTIONS



© Kingspan and the Lion Device are Registered Trademarks of the Kingspan Group plc in the EU and other countries.  
All rights reserved.  
The OPTIM-R is a trademark of the Kingspan Group plc.



*Low Energy –  
Low Carbon Buildings*

## Description

*Kingspan OPTIM-R*® is an optimum performance next generation insulation solution from Kingspan Insulation.

*Kingspan OPTIM-R*® comprises a rigid vacuum insulation panel with a microporous core which is evacuated, encased and sealed in a thin, gas-tight envelope, giving an outstanding thermal resistance, with the thinnest possible solution to insulation problems.

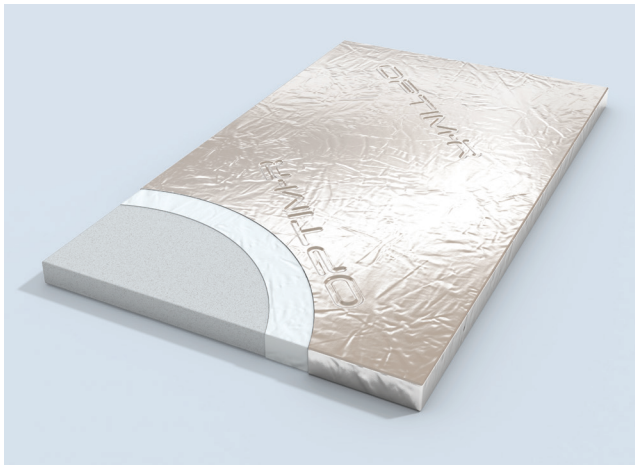


Figure 1: *Kingspan OPTIM-R*®

## General

The *Kingspan OPTIM-R*® is an optimum performance next generation insulation solution from Kingspan Insulation. It comprises of rigid vacuum insulation panels with a micro-porous core which is evacuated, encased and sealed in a thin, gas-tight envelope, giving outstanding thermal resistance, with the thinnest possible solution to insulation problems. The vacuum insulation panels are accompanied with rigid thermoset polyisocyanurate (PIR) insulation infill panels which can be cut to fit around problem areas such as sky lights or other roofing penetrations.

In retrofit applications *Kingspan OPTIM-R*® provides solutions for areas that previously would have remained un-insulated because of insufficient space available.

In new construction *Kingspan OPTIM-R*® can significantly enhance U-values / R-values in areas that would otherwise be accepted as diminishing the overall thermal performance.

The high level of thermal efficiency with minimal thickness, achieved with *Kingspan OPTIM-R*® provides solutions for applications where a lack of construction depth or space is an issue.

## Applications

*Kingspan OPTIM-R*® can be used in a number of different applications and is available in a range of systems:

- *Kingspan OPTIM-R*® Single Ply Roofing System
- *Kingspan OPTIM-R*® Inverted Roofing System
- *Kingspan OPTIM-R*® Balcony & Terrace System

*Kingspan OPTIM-R*® panels are accompanied with rigid insulation *Kingspan OPTIM-R*® infill strips which can be cut to fit around problem areas.

## Design Service

Each *Kingspan OPTIM-R*® system comes with a supporting design service which ensures the ratio of the *Kingspan OPTIM-R*® to the *Kingspan OPTIM-R*® infill and *Kingspan OPTIM-R*® fix for each project is maximised. The panel layout will be designed quickly and effectively, ready for client approval. Each layout will illustrate the size, number and location of the *Kingspan OPTIM-R*® panels. It will also illustrate the size, number and location of any *Kingspan OPTIM-R*® infill and *Kingspan OPTIM-R*® fix panels required. For more details please contact the Kingspan Insulation Technical Service Department.

## Standards & Approvals

*Kingspan OPTIM-R*® is manufactured to the highest standards under a management system certified to ISO 9001: 2008 (Quality Management Systems. Requirements), ISO 14001 (Environmental Management Systems. Requirements), BS OHSAS 18001: 2007 (Health and Safety Management Systems. Requirements) and ISO 50001: 2011 (Energy management systems. Requirements).



**Intertek**

C #: 5008428

CERTIFIED TO:  
ASTM C1667  
ASTM C165  
ASTM D2126

## Product Data Table

Property	Test Method	Result
General		
Nominal Thickness (in / mm)		0.79 - 1.97 / 20 - 50
Standard Dimensions		
Width (in / mm)		11.8 - 23.6 / 300 - 600
Length (in / mm)		11.8 - 47.2 / 300 - 1200
Nominal Panel Mass (lbs per sq. ft. / kg per m)		
20 mm thickness		0.82 / 4
25 mm thickness		1.02 / 5
30 mm thickness		1.23 / 6
35 mm thickness		1.43 / 7
40 mm thickness		1.64 / 8
Compressive Strength, Min. (psi) @ 10% deformation	ASTM C165	25
Dimensional Stability (336 hours @ 70°C, 97% RH)	ASTM D2126	% change
20 mm thickness	length	-0.47
	width	-0.59
50 mm thickness	length	-0.30
	width	-0.13

\* Contact Kingspan Insulation for available non-stock sizes.

## Density

The density of *Kingspan OPTIM-R* falls within the range of 11.25 – 13.10 pcf / 180 – 210 kg/m<sup>3</sup> when tested to BS EN 1602: 2013 (Thermal insulating products for building applications. Determination of the apparent density).

## Service Temperature

*Kingspan OPTIM-R* is suitable for use in temperatures of -40 to +176°F / -40 to +80°C.

## Durability

If installed correctly and protected from damage and penetration, *Kingspan OPTIM-R* will provide reliable long-term thermal performance over the lifetime of the building.

## Resistance to Solvents, Fungi & Rodents

*Kingspan OPTIM-R* should not be used in direct contact with solvent-based adhesive systems. Damaged panels or panels that have been in contact with solvents or acids should not be used.

The insulation core and facings used in the manufacture of *Kingspan OPTIM-R* resist attack by mould and microbial growth, and do not provide any food value to pests.

## Thermal Resistance

ASTM C1667 (Standard Test Method for Using Heat Flow Meter Apparatus to Measure the Center-of-Panel Thermal Transmission Properties of Vacuum Insulation Panels) is the only test method designated by ASTM to be used specifically for testing center panel thermal resistance of Vacuum Insulated Panels. ASTM C1667 further states that Vacuum Insulated Panels fall outside the scope of test method ASTM C518. All of the below stated thermal resistance values are based on Certified ASTM C1667 testing.

Thermal resistance (R-value) of the *Kingspan OPTIM-R* panels of the Roofing System varies with thickness and is calculated by dividing the thickness of the panel by its thermal conductivity.

### ASTM C1667 Center Panel Thermal Resistance Properties

Insulant Thickness		Thermal Resistance
(in)	(mm)	(R-value)
0.79	20	26
0.98	25	32
1.18	30	37
1.57	40	49
1.97	50	60

Refer to Kingspan Insulation for current stock and non-stock sizes.

### Calculated Edge Effect Thermal Resistance Properties\*

Insulant Thickness		Thermal Resistance
(in)	(mm)	(R-value)
0.79	20	22
0.98	25	28
1.18	30	33
1.57	40	46
1.97	50	57

\* Based on ASTM C1667 Thermal Resistance Values. Edge effect R-values vary based on panel size. The listed edge effect R-values in the table are based on the average edge effect R-values from six of the most commonly used panel sizes.

Refer to Kingspan Insulation for current stock and non-stock sizes.

# Contact Details

Sales and Technical Support

Tel 1 800 241 4402

Fax 1 678 589 7325

email [info@kingspaninsulation.us](mailto:info@kingspaninsulation.us)

web site [www.kingspaninsulation.us](http://www.kingspaninsulation.us)

*Kingspan Insulation LLC believes the information and recommendations herein to be accurate and reliable. However, since use conditions are not within its control, Kingspan Insulation LLC does not guarantee results from use of such products or other information herein and disclaims all liability from any resulting damage or loss. No warranty, express or implied, is given as to the merchantability, fitness for particular purpose, or otherwise with respect to the products referred to.*

*For more information on specific building product recommendations and product data, contact your Kingspan Insulation LLC representative.*

*For the most current installation guidelines and compliance information go to [www.kingspaninsulation.us](http://www.kingspaninsulation.us).*



**Kingspan Insulation LLC**

2100 RiverEdge Parkway, Suite 175, Atlanta, Georgia 30328

[info@kingspaninsulation.us](mailto:info@kingspaninsulation.us)

**1-800-241-4402**

**[www.kingspaninsulation.us](http://www.kingspaninsulation.us)**

® Kingspan and the Lion Device are Registered Trademarks of the Kingspan Group plc in the US, Canada and other countries. All rights reserved.

® OPTIM-R is a Registered Trademark of the Kingspan Group plc in the US. All rights reserved.